



The Counties Residents' Association

Protecting the interests of the community

20 Nutter Lane, Planning Application no: 5716/17

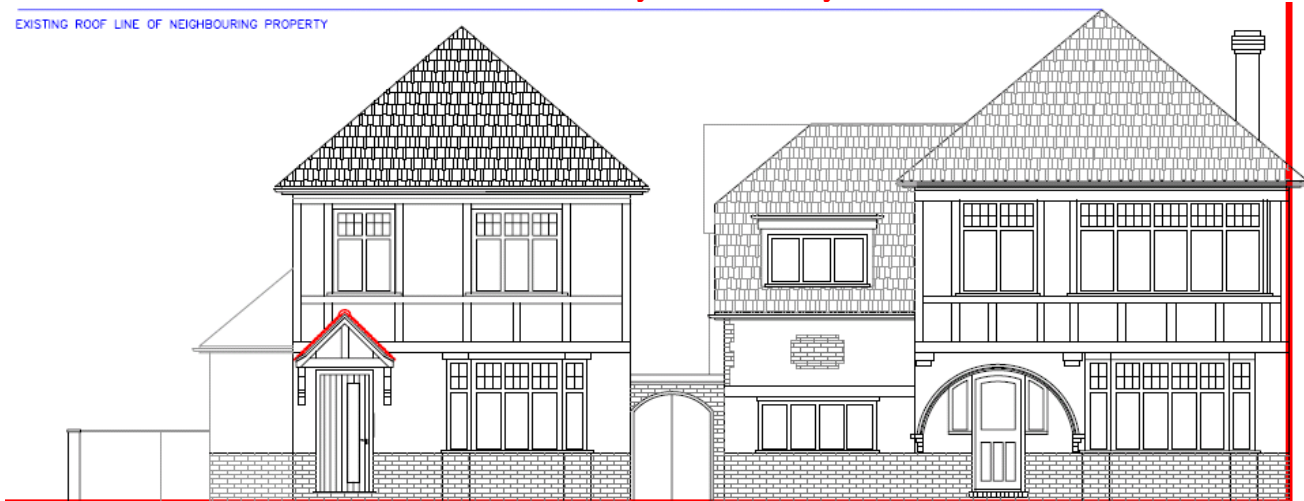
Dear Resident,

We have monitored a planning application for 20 Nutter Lane, which we would bring to your attention. Below you will find the key extract from the plans, with full plans available at Wanstead Library or at www.redbridge.gov.uk (click on "Planning" and then put the above application reference number in the search box).

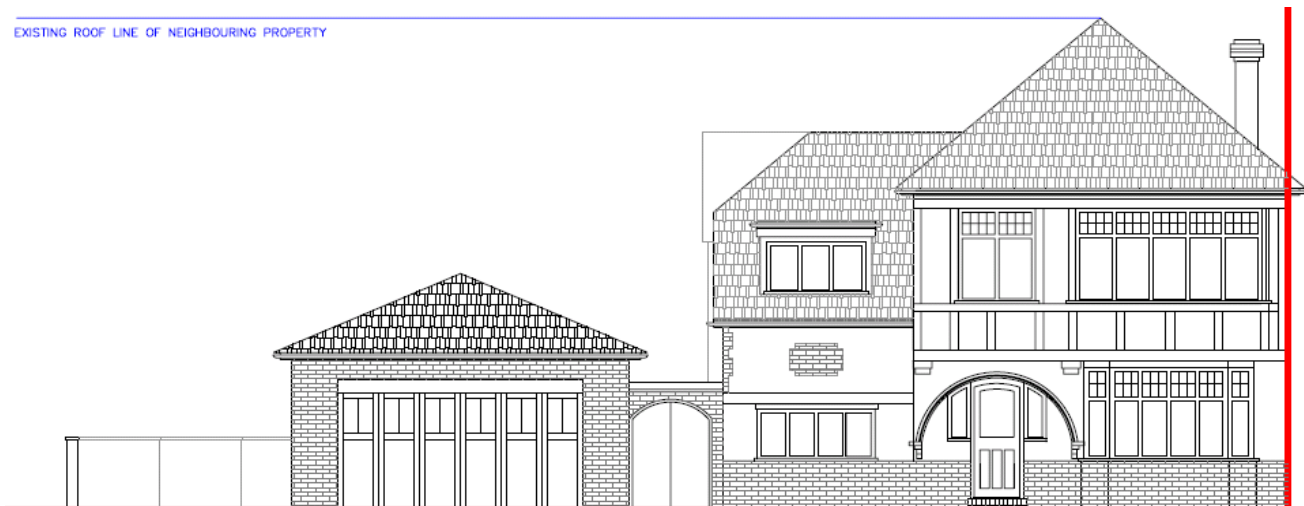
The proposal consists of demolishing the existing garage and creating a two storey detached house generally matching the existing adjacent property. If you wish to make any comments on this application, you can write/email to:-

Ms A Hudson, planning.consultations@redbridge.gov.uk
London Borough of Redbridge, Planning and Regeneration Department
PO Box 2, Town Hall, ILFORD, Essex, IG1 1DD

BY Monday 5th February



PROPOSED FRONT ELEVATION



EXISTING FRONT ELEVATION