



# The Counties Residents' Association

*Protecting the interests of the community*

## **33 Hereford Road, Planning Application no: 0777/16**

Dear Resident,

We have monitored a planning application for 33 Hereford Road, which we would bring to your attention. You will find below the key extract from the plan, with full plans available at Wanstead Library or at [www.redbridge.gov.uk](http://www.redbridge.gov.uk) (click on "Planning" and then put the above application reference number in the search box).

### Application Description:-

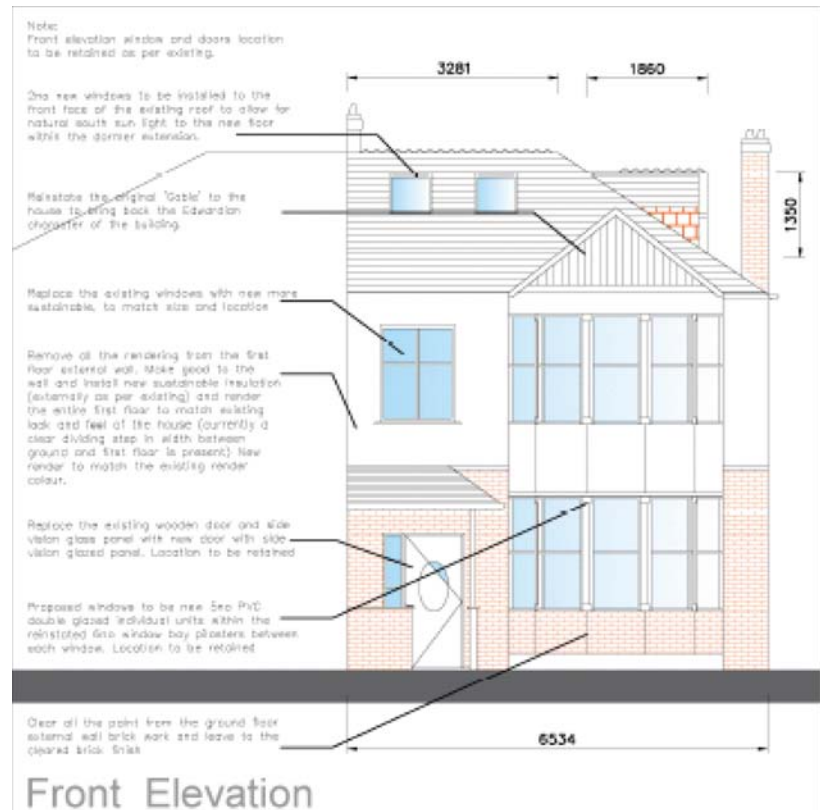
Single storey rear extension to replace the existing, provision of rear and side\* dormers with two roof lights and a gable\* to the front, erection of new front garden with brick wall and door, external design alteration to the front elevation\* of the main dwelling. (Summary) (\*it is these elements which have determined we distribute this newsletter).

If you wish to make any comments on this application, you can write/email to:-

Kwaku Gyamere, [planning.consultations@redbridge.gov.uk](mailto:planning.consultations@redbridge.gov.uk)  
London Borough of Redbridge, Planning and Regeneration Department  
PO Box 2, Town Hall, ILFORD, Essex, IG1 1DD  
**BY FRIDAY 8th April**



Existing Front Elevation



Front Elevation